



Powder Express

The Official Newsletter of the Fall Line Ski Club

December 2009

Celebrate the holiday season at Fall Line Ski Club's 2009 Holiday Party!

Enjoy an evening with good friends,
great food, dancing and holiday cheer!

Tuesday, December 15, 2009

7pm to 11pm

Cater 2 U - Delbasco Room

2901 Marne Highway

Mount Laurel, NJ 08054

856-235-3032

Buffet Dinner * Beer & Wine * Dancing

Tickets: \$40 per person
Tickets sold only in advance, none at the door!

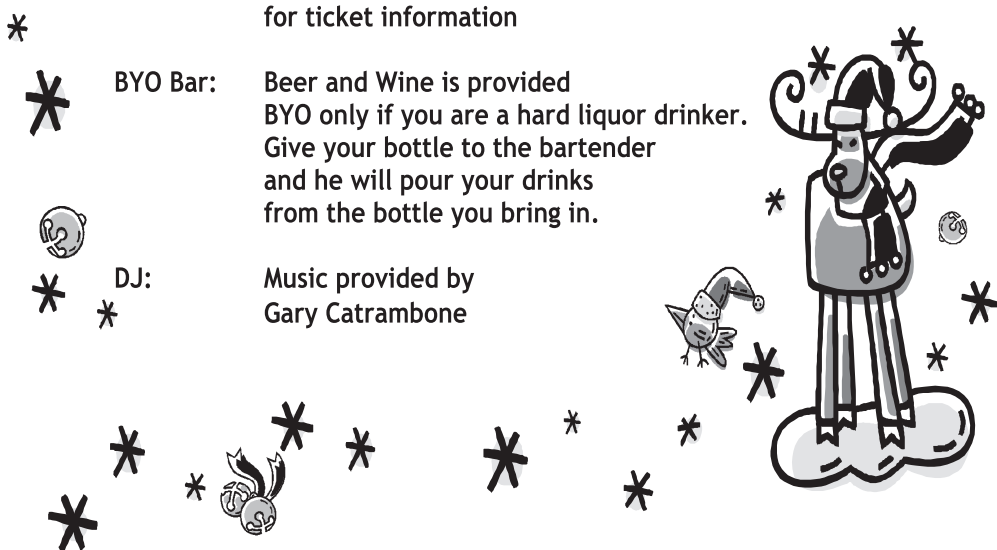
Purchase your tickets from either Nona Luce,
Denise Stockton, Jeannie Nelson or Marie Eagan
at any of our general meetings.

OR

Contact Nona Luce (856) 522-9867
for ticket information

BYO Bar: Beer and Wine is provided
BYO only if you are a hard liquor drinker.
Give your bottle to the bartender
and he will pour your drinks
from the bottle you bring in.

DJ: Music provided by
Gary Catrambone



In This Issue

President's Message	2
Meeting Information	2
Board Members	2
Jay Peak	3
Happy Hours	4
Jughandle Inn	
Phily Diner	
Kaminski's	
Heart of Camden	5
Happy Pill?	5
Winter Trip Schedule	7
Membership Application	8

Happy Holidays

Upcoming Events

Happy Hour

Jughandle Inn

December 4, 2009

Happy Hour

Phily Diner

December 11, 2009

Happy Hour

Kaminski's

December 18, 2009

Heart of Camden

December 19, 2009

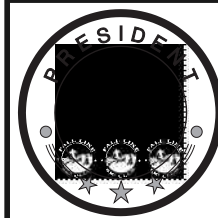
MEETING INFORMATION

General Meetings... are held the first and third Tuesday each month (except for December) at PJ Whelihan's at Route 70 and Greentree Road in Cherry Hill. Meetings are from 8:00 pm until 10:30 pm for trip sign-ups, announcements, information and socializing. Please bring a friend, for newcomers are always welcome.

Board Meetings... are held the 2nd and 4th Tuesday of each month and start at 7:30 p.m. In order for the board to discuss all agenda topics in a timely fashion, members who wish to attend a meeting must contact the Fall Line President prior to the meeting. Your cooperation in this matter is appreciated.

Winter Trip Committee Meetings... are conducted by Wayne Schofield, board member and Winter Trip Chair, and occur monthly. Please call Wayne (856/931-2173) if you are interested in attending or participating.

Summer Trip Committee Meetings... are conducted by Marie Eagan, board member and Summer Trip Chair, and occur monthly. Please call Marie (609/605-1332) if you are interested in attending or participating.



PRESIDENT'S MESSAGE

As you receive this letter we are very close to our annual Holiday Party. I would hope that every member plans to attend to meet old friends and make a few new ones. We are also getting very close to the beginning of our Winter trips. The Snowbird trip will leave the day after the Holiday Party. As most of you know we have been going through some difficult times filling some trips that would normally be instant sell-outs. With the economy weighing heavily on many of us a ski trip is at the end of our list of things to pay for. Most of our week long trips have done well but our weekend trips are lacking and at least one has been cancelled. I am asking each of you to give me any input on how we can grow stronger as a club and what we can do to make you want to participate in our activities. I hope each of you makes a concerted effort to make our Holiday Party. I am buying everyone a drink and will listen to all of your ideas.

Think snow!!

Ken

MEMBERSHIP INFORMATION

Fall Line Ski Club membership begins May 1 and ends April 30. Membership applications for renewals and new membership are accepted anytime during the year. The membership fee is \$25.00 through 9/11/09 and \$30.00 afterwards.

Members have the privilege of attending all Fall Line Ski Club activities during the summer season as well as next ski season. Membership applications may be obtained at any General Meeting, on the penultimate page of most newsletters, at our web site at www.FallLineSkiClub.org or through the mail by contacting:

FLSC

9109 Verree Road

Philadelphia, PA 19115-2801

Phone: 215/969.4736

eMail: Membership@FallLine.org

The membership application should be completed in a legible manner to ensure the proper forwarding of all club correspondence. Any member not receiving the newsletter should stop at the membership table during a General Meeting.

Changes in address or phone numbers should be reported as soon as possible so that you may remain informed of all Fall Line events and activities.

2009-10 OFFICERS & BOARD MEMBERS

Officers:

PRESIDENT - KEN HEATH 610/368-8935
SECRETARY - NONA LUCE 856/778-1942
TREASURER-ELECT - DENNIS HALTERMAN . . 856/429-9780
PRESIDENT ExOfficio - MARIE EAGAN . . 609/605-1332
Club PHONE 856/931-4462

BOARD MEMBERS

STEVE ARCHIBALD 609/238-1362
 BETH EILERS
 EILEEN GODMAN 856/589-2091
 JANICE LYNCH 856/858-6411
 JEANNIE NELSON 856/889-5100
 WAYNE SCHOFIELD 856/931-2173
 DENISE STOCKTON 716/622-7447



Mardi Gras Weekend at Jay Peak



In addition to great skiing, good food, new friends it is the annual Mardi Gras Party at Jay Peak this year. That's right folks, it is all the glitter of beads, feathers, music by Tammy Fletcher, Friday night Happy Hour with Frick & Frack...those DJs with attitude and prizes for a fun filled weekend. Check out what is included:



- ❖ Round-trip motor coach from Cherry Hill to Jay Peak
- ❖ 3 nights accommodations at Hotel Jay (ski-in and ski-out)
- ❖ 3 breakfasts and 2 dinners
- ❖ 3 day lift pass
- ❖ 2 hour ski lessons Friday, Saturday and Sunday
- ❖ Wine & Cheese reception



You're on your own for only your lunch and drinks. How can anyone pass up this fabulous weekend?



Feb. 25 to Feb. 28, 2010—\$559



For more information contact:
Kathie Read Phone: 856-344-2459
E-Mail: kathieread@comcast.net



Jughandle Inn

1018 South Fork Landing Road • Cinnaminson, NJ 08077 • 856-665-8696

December 4, 2009

This is a combined Fall Line Ski Club and SJSC happy hour. There are usually about 50 to 60 or more club members from both clubs turning out for this annual event. So come early and enjoy.

Drink Specials and a live band (Wooya Daddies) from 9pm -1am. Happy hour is from 4pm to 6pm, BUT they are extending it to 7 for Fall Line that will include ½ price wings and drink specials. Please mention Fall Line to get your wrist bracelet. Don't miss this special happy hour. For more info call Jeannie Nelson @ 856-889-5100



Phily Diner

31 Black Horse Pike • Runnemede, NJ 08078-1905 • 856-939-4322

December 11, 2009

Phily Sports Bar is new and exciting. They have a lower and upper level. We will be on the upper lever. They are going to extend happy hour an extra hour for Fall Liners. So happy hour will be from 2 to 7pm. There will also be ½ price appetizers from their extensive menu and reduced drinks. Patty Latanzi from 98.1 is the DJ starting about 5:30pm; I will be there so call me on my cell if you have problems finding the place @ 856-889-5100 (Jeannie Nelson)



Kaminski's Bar and Grill

1424 Brace Road • Cherry Hill, NJ 08002 • 856-428-2555

www.kaminskisbarandgrill.com

December 18, 2009

Let's get together before the holidays to wish everyone Happy Holidays and the see you next year. This will be the last HH for 2009, I hope everyone in our Fall Liner family had a good year.

We will be meeting on the patio. The Kaminski's specials start at 3pm and run to 7pm. They include a FREE Buffet and reduced price drinks. Starting at 5pm one of our favorites is playing Deez 2 Guys; which is Scott on vocals & drums and Mike on vocals & guitar bass and once in a while a Fall Liner or two has joined in. This is a stress free hour w/yoga & Free meatballs. Did you hear what Deez 2 Guys did at Kaminski's ?? Me either. For more info call Jeannie Nelson @ 856-889-5100



Heart of Camden



Santa's Helpers Needed

By Janice Lynch

Like it or not, the holidays are upon us. With the hustle and bustle of last minute shopping it is sometimes nice to take the time out and do something for those less fortunate than you. Although it is not an "official" Fall Line event, several people have asked me about a food give-a-way program that I am involved with.

On Saturday, December 19 at 9 am volunteers are needed to assist Sacred Heart Church and Heart of Camden Housing Corporation in distributing over 1,000 food baskets for the poor. After a prayer of Thanksgiving and a song or two, the volunteers are given a map, load up their cars and set off on what can only be described as a bizarre scavenger hunt to deliver all the makings of a holiday feast in some of the most poorly marked blocks and houses in Camden.

Sacred Heart Church is located at Broadway and Ferry Avenues (in the basement). Come early and park as close as you can since a peach basket full of food and a frozen turkey

can get surprisingly heavy. We recommend that each car or truck should have 2 or 3 people in it since someone should stay with the car while others navigate and deliver the baskets. Coming by yourself is not a problem, just come a little early and see me so I can find you someone to pair you up with. I can usually be found near the door distributing the maps.

No need to RSVP, just show up. If you get lost, call my cell phone 856-816-2865, but leave a return number. Reception is spotty at best in 100-year-old stone church basements.

It usually takes until about noon to deliver the baskets. Just be forewarned... You might have fun and feel good about yourself afterwards. The exact address is the Church of the Sacred Heart, 1739 Ferry Ave, Camden, NJ 08104. If you have further questions, please just call me at 856-858-6411.



Did You Take Your Happy Pill Today?

By Janice Lynch

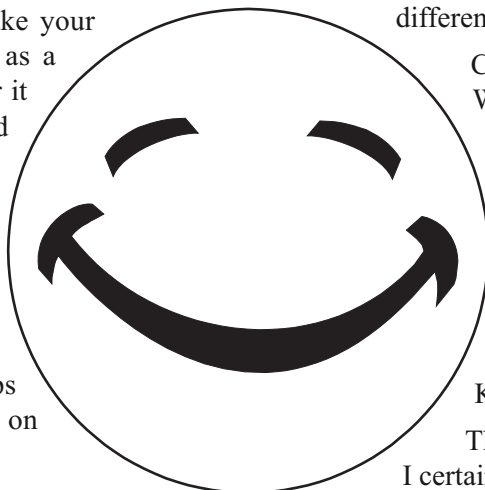
Did you know that happiness is contagious? Unfortunately, so is a bad mood. You get to make the choice of which one you want to be and what you want around you.

As ski season is quickly coming upon us I have found myself asking a question more and more that my mother used to ask me and my 5 siblings – Did you take your happy pill today? We will be traveling as a group in sometimes tight spaces, whether it is by bus or plane. Despite all of the hard work and effort by our Winter Trip Committee delays and bumps in the road do happen.

Most likely we have all been on trips where one person being miserable, loud and complaining makes others start to be grumpy too. There also have been trips where one person's zaniness put a smile on everyone's face.

In case you don't know, board members pay the same price as you do to be on the trip and to hear your complaints. The trip leader also has paid to get this privilege.

Both board members and trip leaders welcome your feedback. Our president, Ken Heath has been trying to call people to get their thoughts on how to make Fall Line better.



But before you scream your complaint from the back of the bus to the trip leader in the front, stop and ask yourself a few questions

Will what you are about to say going to make a difference in the outcome of the trip?

Can the person you are complaining to do a bit of difference about the problem right now?

Could the issue possibly be addressed at a Winter Trip, Summer Trip or Board meeting when we can analyze the problem and possibly do something about it (let alone we all possibly may be a little more sober)?

As I said, we welcome your thoughts, if you are willing to do something about a problem why don't you consider joining one of the committees or the board itself? Give Ken a call, his number is 610-368-8935.

This article was just my personal thoughts and I certainly am not suggesting that people take drugs. I realize that not everyone's personality allows them to be the zany one, but it is up to you as to whether or not you are someone that others wish to be on a long trip with or dread it. Ask yourself, did you take your happy pill today? The answer is contagious.

Stratton, Vermont - \$349

Friday, January 8, to Sunday January 10, 2010



Stratton Mountain Resort is conveniently located in south/central Vermont with its own village. Stratton has 90 trails, slopes and glades covering over 580 acres of terrain, drop of 2,003 feet. There are 16 lifts including one 12 passenger Gondola, four high-speed six passenger chairs, four quad chairs, one triple, one double, two surface lifts and three Magic Carpets. The average snowfall is approximately 180 inches. Snowmaking covers 90% of the terrain. Snow shoeing and cross-country skiing are available at the mountain.

The Inn at Stratton Mountain is a full service hotel offering a restaurant serving breakfast and dinner. Other amenities offered are a hot tub and sauna, a game room and shuttle service to the slopes.

The trip price includes:

- ❖ Round trip motorcoach transportation from Cherry Hill to Stratton
- ❖ Two night's accommodations at the Inn at Stratton Mountain
- ❖ Continental Breakfast
- ❖ Two-day lift ticket
- ❖ Beer, wine and soda on the bus

Lodging Information:

Check-In Date	Check-Out Date	Hotel Name and Phone Number
January 8, 2010	January 10, 2010	The Inn at Stratton, Stratton Mountain Road, S. Londonderry, Vermont 05155

Payment Schedule:

On or Before	Amount	
Sign-up	\$175	
November 2, 2009	Balance	A \$25 charge will be added if final payment is not received by the due date.

Cancellation Policy:

On or Before	Amount	
November 2, 2009	\$50	
After Nov. 2, 2009	Up to the full price of the trip plus any expenses incurred by FLSC.	

Note: No shows will receive no refund and will be responsible for any expenses incurred by FLSC. You are not considered canceled until you have notified and been acknowledged by the trip leader

Departure Information:

Bus departs from the back parking lot of the Clarion Hotel, conveniently located on Route 70 at 295, Cherry Hill, NJ at 6:00 PM **sharp** on Friday. Bus arrives back in Cherry Hill at approximately 11:00 PM Sunday.

Directions to Clarion Hotel Parking:

From 295 North or South get off at Exit 34, Route 70 West. The Clarion Hotel is just past the first traffic light on your right. The parking lot is located at the far back of the hotel parking lot. Look for the Bus.

Make checks payable to: FLSC (Fall Line Ski Club) and put name of trip in description.

For more information contact: Sue Bagosy **Phone:** 610-733-3336 **E-Mail:** sbags25@hotmail.com

Fall Line Ski Club

2009-2010 Winter Trip Schedule as of November 23, 2009

*All FLSC trips include Lift Tickets. FLSC provides Beer, Wine & Soda on weekend bus trips.
Extended trips include air and ground transportation. Lodging is two per room.*

Prices Are Subject To Change & do not include baggage fees

Date	Location	Trip Leader	Lodging	Some Features	Opens	Price
December 16 th – 21 st	Snowbird, Utah	Jeff Stein 856-728-1254	Lodge at Snowbird	Non Stop Delta PHL-SLC 5 nights lodging, 4 day all Alta/Snowbird ski pass, Party	Get on Wait List	\$1,155.00
January 8 th – 10 th	Stratton, Vt.	Sue Bagosy 610-733-3336	Inn At Stratton	Two Day Lift Tickets Two Nights Lodging Continental Breakfast	Available	\$349
January 9 th – 16 th	Copper, Colorado	William Roehner 215-431-3205	Mountain Village Condos	Round Trip air Phila., Denver 7 Nights lodging Beeline Express Pass, party, walk to lifts 5 of 7 day lift.. Lesson Packages Available	Get on wait list	\$1,259.00
January 22 nd – February 2 nd	Cervinia, Italy Florence Extension	Pat Maguire 856-772-1120	Sertorelli Sport Hotel in Cervinia Hotel Balestri in Florence	Round trip air Phila. - Italy 7 nights Cervinia w/breakfast & dinner. Indoor pool & hot tub. 6 day Aosta Valley ski pass. 3 nights in Florence w/breakfast.	Get on wait list	\$2,269 with Florence \$2,125 without Florence
February 5 th - 8 th	Stowe, Vermont	Barry Schofield 609-702-8205	Town and Country Inn Inn	3 nights lodging, 3 breakfasts, 2 dinners, indoor pool & hot tub Plus Super Bowl Party	Available	\$559.00
February 06 th - 13 th	Jackson Hole Wyoming	Sara Walls 609-747-8582	Wort Hotel	7 nights lodging including breakfast, Complimentary Mimosa Welcome Party + another Party during the week. Optional Snowmobile trip thru Yellowstone or day at Grand Targhee	Get on wait list	\$1,649.00
February 19 th - 21 st	Sugarbush, Vermont	"G" Respes 609-636-3513	Inn at Sugarbush	Another Fall Line Favorite 2 Great days of skiing with lifts And breakfast	Cancelled	\$389.00
February 25 th – 28 th	Jay Peak, Vermont	Kathie Read 856-344-2459	Hotel Jay	Ski in/out, (2-hour group lessons, Fri.Sat.Sun) Two Hot Tubs. 3 Breakfasts, 2 Dinners and a wine and cheese party	Available	\$559.00
March 5 th – 13 th	Davos, Switzerland	Ann Marsteller 856-772-9414	4*Meierhof Hotel	Non-stop Newark-Zurich, 7 nights lodging, Buffet Breakfast and 4 course Dinner daily, 6 day Davos all region ski pass.	Get on wait list	\$2,359.00
March 13 th – 21 st	Silverstar & Big White British Columbia, Canada	Bob Suravage 609-654-5521	Vance Creek Hotel at Silverstar and The Inn at Big White	Two Resorts in one week! Fly Phila. or Newark to Kelowna, BC. 8 nights lodging, 6 of 7 day lifts, ski in / ski out, buffet breakfast included, group party.	Available	\$1,599.00
April 8 th – 13 th	Winter Park, Colorado	Deb Taraska 609-747-8582	Alpenglo Lodge	Round trip airfare Philadelphia/Denver, 5 nights lodging, 4 of 6 day lift pass, party, indoor hot tub	Available	\$899.00

Prices in **bold** reflect early sign-up discount. This discount is available only at trip opening for weekend trips; for weeklong trips it's available for the first two meetings the trip is open. You must be a member to sign up!

Winter Park, Colorado

Thursday April 8th to Tuesday, April 13th, 2010

\$859 Early Sign-up Price on August 4, and August 18, 2009

\$899 After August 18, 2009



Winter Park is a big time ski resort with a small town atmosphere. The resort is composed of 3 mountains, Winter Park, Mary Jane and Vasquez Cirque. Winter Park is a paradise of cruisers, Mary Jane is known for its bumps and the high alpine Parsenne Bowl, and Vasquez Cirque is simply extreme by any standards. Of all the resorts in Colorado, the 30 feet of snow that drop on Winter Park tops the list.

Only 90 miles from Denver, we'll be staying at the Best Western Alpenglo Lodge, which is close to the bars and shops in town. It is also located on the convenient shuttle bus route to the mountain. The hotel rooms are equipped with two queen beds and several have a micro-fridge unit.

The trip price includes:

- ❖ Round-trip air transportation between Philadelphia and Denver on US Air
- ❖ Round-trip motorcoach transportation between Denver and Winter Park
- ❖ Five nights lodging at **The Alpenglo Lodge** (Full Breakfast Daily)
- ❖ Four-day lift ticket
- ❖ Group party
- ❖ Fall Line Ski Club personal luggage tags
- ❖ Indoor Hot Tub.

Options: Trip Insurance is available. Please see trip leader for details.

Flight Schedule	Departure Date	Airline	Depart	Time A	Arrive Time	
	Thursday, April 8th, 2010	US Air # 751	Philadelphia	6:10 PM	Denver	8:28 PM
	Tuesday, April 13th, 2010	US Air # 750	Denver	1:30 PM	Philadelphia	7:10 PM
	Note: These are the scheduled flight times at time of printing. Both airline and departure times are subject to change.					

Hotel Info.	Check-In Date	Check-Out Date	Hotel Address and Phone Number
	April 8th, 2010	April 13th, 2010	Alpenglo Lodge, Best Western, US Highway 40, Winter Park, CO,

Payment Schedule	On or Before	Amount	Price is subject to change due to any costs incurred by FLSC. Your airline ticket name must match your picture identification!! Any name change after ticketing will be subject to fees imposed by the carrier.
	Sign-up	\$250	
	October 20, 2009	\$250	
	January 5, 2010	\$200	
February 2, 2010	Balance	A \$25 charge will be added if final payment is not received by the due date.	

Cancellation Policy	On or Before	Amount
	October 5, 2009	\$50
	November 2, 2009	Up to \$350
	February 2, 2010	Up to \$650
	After February 2, 2010	Up to the full price of the trip plus any expenses incurred by FLSC.
Note: No shows will receive no refund and will be responsible for any expenses incurred by FLSC. You are not considered canceled until you have notified and been acknowledged by the trip leader.		

Make checks payable to: FLSC (Fall Line Ski Club) and put name of trip in description.

For more information contact: Deb Taraska

Phone: 609-747-8582 **E-Mail:** dtaraska@hotmail.com

Merry Christmas



and a happy new year



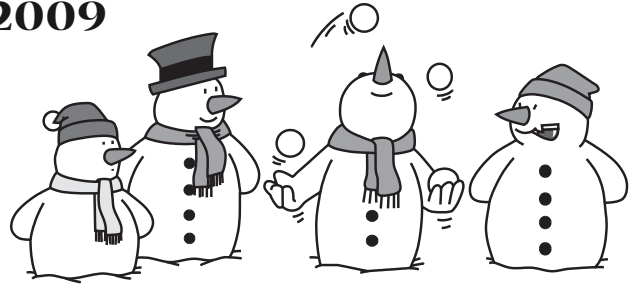
FLSC

Holiday Party

December 15, 2009



KWANZAA



"As featured in the Philadelphia Inquirer"

www.FallLineSkiClub.org

PLEASE VISIT FALL LINE SKI CLUB'S WEBSITE @

Address Service Requested

Cherry Hill, NJ 08034

P.O. Box 1535

Fall Line Ski Club

First Class

U.S. Postage

PAID

Bellmawr, NJ 08031

Permit No. 884