



Powder Express

The Official Newsletter of the Fall Line Ski Club

February 2010

Ten Top Reasons To Sign Up for Jay Peak

10. Because you want New England skiing at it's finest!
9. You like being pampered by the Inn at Jay
8. You LOVE true ski-in/ski-out accommodations
7. You like flashing your beads all weekend long at the Mardi Gras celebration
6. You like the full menu dinners and large hot buffet breakfasts which are included
5. You like the giveaways and partying with Frick & Frack at Happy Hour
4. You like the FLSC Wine & Cheese party
3. You like the 3 days of ski lessons - included
2. You don't want to miss out on the FLSC hot tub party

And, drum roll please,



You are smart and you know a great value when you see it!!!!

For more Information contact:
Kathie Read 856-344-2459
kathieread@comcast.net

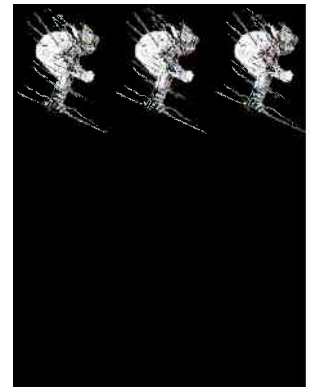
PRESIDENT'S MESSAGE

This article is coming from Copper Mountain Colorado. I have joined the 31 Fall Line Ski Club members and they are having a ball. Even though there has been no new snow the mountain is in pretty good shape. The trees, the bumps and the groomers are great. After a day of skiing the group met at Jacks and were treated to interactive band called Lefty Lucy. When I arrived there were several Fall Liners dancing on the bar and many more followed. Fun was had by all.

I would like to ask all members of the club to consider running for office, joining the winter or summer trip committee, or looking to join the board. The success of the club depends on the participation of its members. Get involved, voice your concerns, and make your ideas known.

Think snow!!

Ken



MEETING INFORMATION

General Meetings... are held the first and third Tuesday each month (except for December) at PJ Whelihan's at Route 70 and Greentree Road in Cherry Hill. Meetings are from 8:00 pm until 10:30 pm for trip sign-ups, announcements, information and socializing. Please bring a friend, for newcomers are always welcome.

Board Meetings... are held the 2nd and 4th Tuesday of each month and start at 7:30 p.m. In order for the board to discuss all agenda topics in a timely fashion, members who wish to attend a meeting must contact the Fall Line President prior to the meeting. Your cooperation in this matter is appreciated.

Winter Trip Committee Meetings... are conducted by Wayne Schofield, board member and Winter Trip Chair, and occur monthly. Please call Wayne (856/931-2173) if you are interested in attending or participating.

Summer Trip Committee Meetings... are conducted by Marie Eagan, board member and Summer Trip Chair, and occur monthly. Please call Marie (609/605-1332) if you are interested in attending or participating.

Stratton, Vt — 2010

Where's the Bus...

January 8 – 10, 2010

By Sue Bagosy

The trip started and ended with drama. Everyone arrived at the new pickup location at the Crown Plaza to find only yellow school buses but no Starr bus. There was some panic that the club had cut back and we would be riding to Vermont in a yellow school bus. The Starr bus arrived at 5:45 and there was a quick load and we were off.

Skiing on the mountain was breathtaking despite the cold weather. The quaint village looked very European and the skiing was satisfying to all levels. Franklin, Harlan, Christine and Luis did 4 minute hops on the fastest chairs they could find. They also visited the terrain parks to discover how much fun they can be on skis just to fly over the bumps and catch some air!

It was Joe's first ski trip with Fall Line – he will be back. Mark mad first tracks and Patty McBride survived the the cold thanks to Steve and Doug's warm hands and Sandy's green jacket. Mulligan's Pub in the village provided some friends with great Irish stew made with Guinness and the the Chocolate Lava cake was decadent. Sue skied her first mogul run, but Joanne, Debbie and Robin went around. Mary made her return to skiing after a torn ACL on Jay Peak in 2007. Margarita found a beautiful sweater at the shops. Unfortunately, Eagles SUCK was the lowlight of the trip!

Upon arrival at the Crown Plaza, Karen's battery died and Franklin and Chris (thanks!) helped to jump her car. The horn alarm could not be shutoff so all of Cherry Hill knew we had returned. A good time was had by all in what turned out to be a fun trip!

MEMBERSHIP INFORMATION

Fall Line Ski Club membership begins May 1 and ends April 30. Membership applications for renewals and new membership are accepted anytime during the year. The membership fee is \$25.00 through 9/11/09 and \$30.00 afterwards.

Members have the privilege of attending all Fall Line Ski Club activities during the summer season as well as next ski season. Membership applications may be obtained at any General Meeting, on the penultimate page of most newsletters, at our web site at www.FallLineSkiClub.org or through the mail by contacting:

FLSC

9109 Verree Road

Philadelphia, PA 19115-2801

Phone: 215/969.4736

eMail: Membership@FallLine.org

The membership application should be completed in a legible manner to ensure the proper forwarding of all club correspondence. Any member not receiving the newsletter should stop at the membership table during a General Meeting.

Changes in address or phone numbers should be reported as soon as possible so that you may remain informed of all Fall Line events and activities.

Officers:

PRESIDENT - KEN HEATH 610/368-8935

SECRETARY - NONA LUCE 856/778-1942

TREASURER-ELECT - DENNIS HALTERMAN . . . 856/429-9780

PRESIDENT ExOfficio - MARIE EAGAN . . . 609/605-1332

Club PHONE 856/931-4462

BOARD MEMBERS

STEVE ARCHIBALD 609/238-1362

BETH EILERS

EILEEN GODMAN 856/589.2091

JANICE LYNCH 856/858-6411

JEANNIE NELSON 856/889-5100

WAYNE SCHOFIELD 856/931-2173

DENISE STOCKTON 716/622-7447

Fall Line Explorers Tackle Snowbird – December 2009

By Jeff Stein

Like a scene from a Warren Miller ski film, 12 explorers from Fall Line left Philadelphia on Wednesday, December 16, 2009, en route to Utah's Wasatch mountains and the back-to-back ski resorts of Snowbird and Alta. Awake well before any sign of daylight, it was a cool morning when these explorers convened at Philadelphia International Airport's (PHL) "A" terminal. They were a bit bleary-eyed, yet energized to be boarding a 7:00 AM Delta flight for the 5 hour 12 minute direct trip to Salt Lake City (SLC).

The explorers encountered the usual chaos at PHL. However, many figured out that they could experience an "express" check-in by standing in line at 6:00 AM, just one hour before departure, and moving to the front of the line. Most of our bags were collected quickly and followed by a short wait in the departure area before boarding the crowded flight. And, the payback for this 7:00 AM flight would be an early arrival in Salt Lake City and the equivalent of an extra ½ day of a ski vacation.

The Tail Winds Prevail...

The explorers had a great tail wind and their flight touched down in SLC just after 10:00 AM. And, unlike in Philadelphia, by the time that we were at the bag claim concourse, most of our luggage was waiting for us. However, we would learn that a screw up in Philadelphia left one explorer without his main bag. Although it would take two days until this piece made its way to Snowbird, the explorer didn't mind the opportunity to use some new "rental" garments compliments of Delta.

You can tell a group's importance by the way that they travel. Generally a large transport is linked with importance. And, it was obvious that this group of 12 had importance as they loaded in to a 42-passenger coach. We were surely living "large". This time around we did not need to be concerned about the usual problem of too much luggage and not enough cargo space.

By 11:50 AM on this bright, sunny day, we made our way up the canyon road and arrived at our home for the next several days, The Lodge at Snowbird. Unlike previous trips to this destination, we arrived in daylight and were able to admire this beautiful mountain range against the background the sunlit bright blue sky. Once they checked-in, the group took time to relax and prepare for the four-day ski exploration. On this day, none of the explorers wanted to test out the 90-minutes of "ski free" time available at neighboring Alta.

Early Season, Yet it Feels Like Spring

Comprised of eight downhillers and two boarders, the explorers headed for the hills of both Snowbird and the wide-open runs of Alta on Thursday. The mild weather and blue sun lit sky for this day would be replicated over the next three days. Although the

calendar read December 17, it felt like early April. Just a few days before we arrived the Snow Gods had "delivered" to the Wasatch. We appreciated this fortune along with just about no lift lines. Additionally, being here a week later than last year would mean more of the mountain was open.

By the end of their season opener day, the explorers would concur that the skiing was not too shabby for early season. But this was a trip deep with its traditions. The explorers concluded their ski day by relaxing in the lodge's outdoor pool and whirlpool. After the wet stuff outside, it was time to whet the palate inside at the lodge's Thursday night wine and cheese reception. The Fall Line explorers enjoyed socializing by the fireplace, checking their notes for the day, and scoping out the slopes for Friday. Then, many enjoyed dinner downstairs at the lodge's casual bistro. Soon it was time for the explorers to get ready for day two on the slopes.

Storm Threatens the East – Head West...

On Friday, December 18, as the explorers prepared to tackle day #2 on the Wasatch region's slopes, we seemed to be in the equivalent of "protective weather custody" as the East was nervous about the pending "blizzard" that would dump over 22" of snow on the Delaware Valley. The only question that the explorers had was "... Why not us?"

Nonetheless, we were enjoying perfect mountain vistas and the opening of more runs, under mild Utah temperatures that were just perfect for skiing. And, at 5:00 AM on this day, that missing piece of luggage from Philadelphia and its explorer were happily reunited.

On the slopes, there was a noted prevalence of near-perfect Utah powder. It was also obvious that group size does matter. As a smaller group, the explorers were able to ski and lunch together, and build a social bond. Hey, isn't that why we go on trips as a ski club anyway?

Although ski traffic at the Bird was heavier on this Friday, quality powder and solitude could still be found on the expert steeps of Regulator Johnson en-route to the Gad Valley slopes.

The explorers wrapped this day of skiing with the traditional Fall Line party. It was in a comfortable setting that our group convened to enjoy food and spirits. And, then there was the Warren Miller DVD. A party that was to last for an hour went on for close to three hours. The Fall Line explorers watched as Miller's extreme skiers traveled and hiked from the warm to the cold to replicate Ernest Shackleton's ill-fated trip to one of the most haunting and astonishing spots on the planet - Antarctica's South Georgia Island.

Philly Freezes as Explorers Bask at the Basin

On Saturday, as Philly froze with snow in some of the worst weather to hit the East Coast in years, the Wasatch Region was basking in some of the best December weather that we have seen in years. It was a true tale of two towns. The conditions at home were quickly deteriorating and here at Snowbird / Alta, things were getting much better.

For the last two days we ogled with anticipation into the Mineral Basin back bowl with its untracked powder, and waited patiently for the Snowbird – Alta connector to open. Finally, this bowl, with

its virgin powder and lasting radiant sun, was ours! The explorers tackled the Mineral Basin making fresh tracks from the Path to Paradise down Lone Star, High Stakes and the other expert runs over the Hamilton Cliffs to the high-speed Mineral Basin Express and Baldy Express lifts. Enjoying the benefits of our special “Bird / Alta” lift ticket, the explorers skied into Alta. Surely this day provided the explorers with a full skiing adventure.

By the day’s end, the explorers returned to the lodge to dip in the outdoor pool and whirlpool, and gather over drinks and food down at the Bistro. It would be time to plan the strategy for the final ski day, Sunday.

Hard to Imagine – It Was Even Better...

If our skiing experience and weather over the past three days was great, our final day here at the Bird was just unprecedented for December. Many of the experienced Snowbird explorers know that with four days of skiing here, you rarely get all of them to be bright and sunny with mild temps. Under sunny, blue skies and temps in the 30’s it was important to remember the sun lotion. It was spring in December.

A team of explorers headed for the Snowbird Peruvian chair to the Peruvian Gulch for a ride through the 600’ tunnel into the Mineral Basin bowl. Conditions in the basin were even better than from the previous days. Snow chunks from Saturday became Sunday’s soft snow. Yet, soft conditions did create a closure of a portion of the Mineral Basin because of avalanche concerns.

Some of explorers were stuck sitting on the Baldy Express chair for over 15 minutes as a “technical issue” was repaired. Although it was a nice sunny day to be left sitting on the chair, it did become a bit discerning when a lift technician climbed one of the towers to free a “stuck” chair and reset the lift.

Once the explorers made their way to the top, then ventured into the sunny wide open powder runs of Alta.

Was this Really December Utah Skiing?

The snow was giving. Just push it, then the steeps and bumps were doable. With a little carving, you could get down just about anything. In Utah, the explorers were concerned about being overdressed and that skier’s “raccoon tan”, while the Delaware Valley was cleaning up from the largest December snowfall in decades.

A number of the explorers cut the last day a bit short to watch the Eagles cream the SF 49ers by a score of 27 to 13 flanked by 23” of snow at the Linc. Later that night many of the explorers gathered at the Wildflower restaurant for eats, drinks, jokes and some lasting memories as their ski adventure was quickly drawing to a close.

Heading Back to The Snow

It was Monday, December 21 at 5:45 AM when these Fall Line explorers received that wakeup call. As you know, that wakeup call is the signal that your adventure is rapidly drawing to a close. Under a dark, quiet, cool sky, shortly before 7:00 AM, we boarded that large coach for the trip back to the frigid East. Now, as we sat in this 42-passenger coach, there was little doubt that this was an important group of explorers.

As we made our way through the Cottonwood Canyon to SLC, the sun made its way up the mountains to form an incredible scenic wall. An unusually warm December resulted in heavy Salt Lake smog at the 4000’ level. Looking at those mountains through the smog, it was easy to appreciate the past four days of perfect weather, skiing above the pollution, and that base elevation of 7700’.

Poor weather and cancellations over the past two days resulted in a packed SLC airport and Disneyland - like check-in lines. Although the airport was crowded, the lines seemed to move better the lines in Philadelphia on a good day. After a 50-minute delay, a packed 737 Delta jet safely departed Salt Lake. Around 4:15 PM, we touched down at snow covered PHL and prepared for the hardest part of this mission – recovering your luggage.

An Explorer’s Journey is Completed When...

In Philadelphia, an explorer’s journey does not end until his or her baggage is recovered. Philadelphia may be the home of soft pretzels and cheese steaks, but PHL is the home of slow baggage and flight delays.

As the explorers walked slowly through terminal “A” to the bag claim, it was still too fast. They patiently waited for their belongings. By 5:30 PM, approximately 75 minutes after landing, this journey of six days was finally ending as our bags slowly appeared on the belt.

And so, this exploration by 12 Fall Liners was a success!

Happy Hour **Kaminski’s Bar & Grill**

1424 Brace Rd • Cherry Hill, NJ

Friday, February 19, 2010

6:00PM - ??

Come out on Friday Feb. 19th to a Fall Line favorite, the *new and improved* Kaminski’s Bar & Grill. We will be meeting out on Kaminski’s Patio.

Kaminski’s happy hour specials start at 3:00 PM, so you are free to arrive there early and be even happier when the rest of us arrive!! These specials run until 7:00 PM and include a *FREE* buffet and reduced priced drinks!!

For directions or further information, please contact the bar at (856) 428-2555, or check out their website <http://www.kaminskisbarandgrill.com>

Fall Line Ski Club

2009-2010 Winter Trip Schedule as of January 21, 2010

All FLSC trips include Lift Tickets. FLSC provides Beer, Wine & Soda on weekend bus trips.

Extended trips include air and ground transportation. Lodging is two per room.

Prices Are Subject To Change & do not include baggage fees

Date	Location	Trip Leader	Lodging	Some Features	Opens	Price
December 16 th – 21 st	Snowbird, Utah	Jeff Stein 856-728-1254	Lodge at Snowbird	Non Stop Delta PHL-SLC 5 nights lodging, 4 day all Alta/Snowbird ski pass, Party	Over	\$1,155.00
January 8 th – 10 th	Stratton, Vt.	Sue Bagosy 610-733-3336	Inn At Stratton	Two Day Lift Tickets Two Nights Lodging Continental Breakfast	Over	\$349
January 9 th – 16 th	Copper, Colorado	William Roehner 215-431-3205	Mountain Village Condos	Round Trip air Phila., Denver 7 Nights lodging Beeline Express Pass, party, walk to lifts 5 of 7 day lift.. Lesson Packages Available	Over	\$1,259.00
January 22 nd – February 2 nd	Cervinia, Italy Florence Extension	Pat Maguire 856-772-1120	Sertorelli Sport Hotel in Cervinia Hotel Balestri in Florence	Round trip air Phila. - Italy 7 nights Cervinia w/breakfast & dinner. Indoor pool & hot tub. 6 day Aosta Valley ski pass. 3 nights in Florence w/breakfast.	Over	\$2,269 with Florence \$2,125 without Florence
February 5 th - 8 th	Stowe, Vermont	Barry Schofield 609-702-8205	Town and Country Inn Inn	3 nights lodging, 3 breakfasts, 2 dinners, indoor pool & hot tub Plus Super Bowl Party	Canceled	
February 06 th - 13 th	Jackson Hole Wyoming	Sara Walls 609-747-8582	Wort Hotel	7 nights lodging including breakfast, Complimentary Mimosa Welcome Party + another Party during the week. Optional Snowmobile trip thru Yellowstone or day at Grand Targhee	Get on wait list	\$1,649.00
February 19 th - 21 st	Sugarbush, Vermont	"G" Respes 609-636-3513	Inn at Sugarbush	Another Fall Line Favorite 2 Great days of skiing with lifts And breakfast	Cancelled	\$389.00
February 25 th – 28 th	Jay Peak, Vermont	Kathie Read 856-344-2459	Hotel Jay	Ski in/out, (2-hour group lessons, Fri.Sat.Sun) Two Hot Tubs. 3 Breakfasts, 2 Dinners and a wine and cheese party	Available	\$559.00
March 5 th – 13 th	Davos, Switzerland	Ann Marsteller 856-772-9414	4*Meierhof Hotel	Non-stop Newark-Zurich, 7 nights lodging, Buffet Breakfast and 4 course Dinner daily, 6 day Davos all region ski pass.	Get on wait list	\$2,359.00
March 13 th – 21 st	Silverstar & Big White British Columbia, Canada	Bob Suravage 609-654-5521	Vance Creek Hotel at Silverstar and The Inn at Big White	Two Resorts in one week! Fly Phila. or Newark to Kelowna, BC. 8 nights lodging, 6 of 7 day lifts, ski in / ski out, buffet breakfast included, group party.	Available	\$1,599.00
April 8 th – 13 th	Winter Park, Colorado	Deb Taraska 609-747-8582	Alpenglo Lodge	Round trip airfare Philadelphia/Denver, 5 nights lodging, 4 of 6 day lift pass, party, indoor hot tub	Available	\$899.00

Prices in **bold** reflect early sign-up discount. This discount is available only at trip opening for weekend trips; for weeklong trips it's available for the first two meetings the trip is open. You must be a member to sign up!

Happy Hour at Cork Restaurant

90 Haddon Ave • Westmont, NJ 08108

February 5, 2010
From 4 to 7:30 pm
856-833-9800

The Cork has a bar that is a 22 foot mahogany table that warms the room. Spend the night with a group of friends with a small plate, Martini, or Belgian beer. For those of us who like to stay a little later that is a live jazz band starting at 9:30pm for our entertainment.

For the draft beer drinkers they offer 15 beer and Belgian beer selections including favorites like Hoegaarden, Delerium, LaChouffe (seasonal) and Palm Beer all from Belgium, Ommegang Witte Beer from New York, Maudite from Canada and Guinness from Ireland.

Local Beers on draft include Flying Fish and Dogfish Head, 35 Bottled Beers from all over the world. Draft combination favorites like Belgian Waffle, Dirty Hoe and Black Tan.

That takes care of all the beer drinkers in the crowd. For us none beer people, there are \$5 Martinis Cosmos, \$4 Margaritas, Well Drinks, House Red and White Wine and \$2 off all Beers.

For the food lovers, there is an extensive half price Menu and for the late to happy hour it's until 7:30pm

For more info call Jeannie Nelson @ 856-889-5100

Happy Hour at Girmarello's Restaurant

329 Haddon Ave • Westmont, NJ 08108

February 12, 2010
11:30am to 6:30pm
856-858-9400

Welcome to GBar Lounge, located inside Giumarello's Restaurant in Westmont, NJ.

Happy Hour is from 11:30am until 6:30pm they offer \$1.00 off all Drinks and ½ Price Appetizers.

They use Premium alcohol, fresh ingredients and creativity combine to bring our guests the most unusual, yet delicious combinations on there extensive Martini Menu. Choose from over 40 varieties, or unwind with a glass of wine from some of the most renowned vintners available, both here and abroad.

They are known for there amazing Martini Menu!
Try some of these new additions....

Biscot'Tini
Maytag Martini
Xtra-Hottie
Root Beer Float
Lemon Crush (*Made with Homemade Lemoncello*)

Hope to see everyone on Friday night, for more info call Jeannie Nelson @ 856-889-5100

6 ←

POWDER EXPRESS

"As featured in the Philadelphia Inquirer"

www.FallLineSkiClub.org

PLEASE VISIT FALL LINE SKI CLUB'S WEBSITE @

Address Service Requested

Cherry Hill, NJ 08034

P.O. Box 1535

Fall Line Ski Club

First Class

U.S. Postage

PAID

Bellmawr, NJ 08031

Permit No. 884