



Winter, Spring, Summer and Fall

# POWDER EXPRESS

September 2011

Fall Line That is...

## Cortina D'Ampezzo, Italy / Sicily Extension

By: Patty Shearer

**F**all Line Ski Club's 'official' European trip takes us to the BRAND NEW destination of **Cortina D'Ampezzo** ("Queen of the Dolomites"), a world-famous winter resort that rivals any other in the Alps. The **Dolomiti Superski** offers 800 miles of pistes, 460 lifts and 457 interconnected pistes with plenty of off-piste skiing. Cortina encompasses 70 miles of runs on three separate ski complexes: Cortina (including Cristallo, Faloria and Mietres), Tofana and Lagazuoi/Cinque Torri with free shuttle buses linking the areas. The Tofana Express, a new 6-seat chairlift, takes you swiftly to the higher and more technically challenging runs, like Canalone and the famous Schuss.

**NOT SKIING? Just deduct \$350 and tour!**

### Trip Price – Cortina Only:

**\$2,119 – Early sign-up price extended until September 6<sup>th</sup>**

**\$2,169 – After September 6<sup>th</sup>**

### Trip Price – Cortina with 3-Day Sicily Extension:

**\$2,653 – Early sign-up price extended until September 6<sup>th</sup>**

**\$2,703 – After September 6<sup>th</sup>**

### Optional Non-Skiing Excursions:

- Venice & Island of Morano
- Open Market & Prosecco Winery visit
- Bolzano & 'Otzi the Iceman'
- Innsbruck & visit to Swarovski Crystal World

For more details refer to the informational sheet on the Winter Trip Schedule at [www.FallLine.org](http://www.FallLine.org) or contact Patty Shearer at 856-220-5419 or via e-mail at [pshearer4@comcast.net](mailto:pshearer4@comcast.net).

## Authentic German Festival Cannstatter Volksfest

*(That means great German beer and good food)*

Sunday, September 4, 2011

By Marion Rosener

Every Labor Day Weekend the Cannstatter hosts the very popular Volksfest / Oktoberfest party. Located off Academy Road in NE Philly, there will be three days full of great food, fantastic entertainment, prizes, vendors, rides for the kids, and much more.

### What you can expect at the festival:

- Crafts • German Beer & Wines
- German-American Singing & Dancing • Souvenirs
- German Clothing • Rides and Games
- Altweibermühle: True Fountain of Youth
- Authentic Oktoberfest Atmosphere

Come hungry because you will experience the best in German-American Foods such as:

Schwäbische Spezialitäten (Best German-American Food)

Sauerbraten • Heisser Leberkäse • Kartoffel-Salat  
Maultaschen • Spätzle

Bratwurst • Frankfurters • Heisser Zwiebelkuchen  
Pflaumenkuchen

Zwetschgenkuchen and much more !

**Festival Address:** 9130 Academy Road  
Philadelphia, PA 19114

### Meeting Time and Location:

2 PM at the Entrance of the Festival

**Cost of Admission:** \$6.00 pp

### For More Information:

Please contact Marion Rosener via email at

[RosenerMar@aol.com](mailto:RosenerMar@aol.com)

or by cell phone (856) 904-5565

RSVP appreciated

**Cannstatter Website:** <http://www.cvvphilly.com>

## MEETING INFORMATION

**Mixer Meetings...** are held the first and third Tuesday each month (except for December) at Dublin Square on Evesham Road in Cherry Hill. Meetings are from 7:30 pm until 10:30 pm for trip sign-ups, announcements, information and socializing. Please bring a friend, for newcomers are always welcome.

**Board Meetings...** are held the 2nd and 4th Tuesday of each month and start at 7:30 p.m. In order for the board to discuss all agenda topics in a timely fashion, members who wish to attend a meeting must contact the Fall Line President prior to the meeting. Your cooperation in this matter is appreciated.

**Winter Trip Committee Meetings...** are conducted by Patty Shearer, board member and Winter Trip Chair, and occur monthly. Please call Patty (856/220-5419) if you are interested in attending or participating.

**Events Committee Meetings...** are conducted by Nona Luce, board member and Events Committee Chair. Please call Nona (856-522-9867) if you would like to participate in planning or leading an event for the club.

## MEMBERSHIP INFORMATION

Fall Line Ski Club membership begins May 1 and ends April 30. Membership applications for renewals and new membership are accepted anytime during the year. The membership fee is \$25.00 until 9/10/11 and \$30.00 afterwards..

Members have the privilege of attending all Fall Line Ski Club activities during the summer season as well as next ski season. Membership applications may be obtained at any General Meeting, on the penultimate page of most newsletters, at our web site at [www.FallLineSkiClub.org](http://www.FallLineSkiClub.org) or through the mail by contacting:

**FLSC**  
112 Stephenson Way  
Huntingdon Valley, PA 19006-2229  
Phone: 215/357.2305  
eMail: [Membership@FallLine.org](mailto:Membership@FallLine.org)

The membership application should be completed in a legible manner to ensure the proper forwarding of all club correspondence. Any member not receiving the newsletter should stop at the membership table during a General Meeting.

Changes in address or phone numbers should be reported as soon as possible so that you may remain informed of all Fall Line events and activities.

## 2010-11 OFFICERS & BOARD MEMBERS

### Officers:

**PRESIDENT** - Bill ROEHNER . . . . .215/431-3205  
**PRESIDENT-ELECT** - KATHIE READ . . . . .856/356-2239  
**SECRETARY** - NONA LUCE . . . . .856/778-1942  
**TREASURER** - Siobhan Michaud . . . . .856/608-1320  
**PAST-PRESIDENT** - KEN HEATH . . . . .610/368-8935  
**Club PHONE** . . . . .856/931-4462

### Board Members

TOM BIANCO . . . . .856/297-4603  
MICHELE LACONEY . . . . .609-410-2177  
JANICE LYNCH . . . . .856/858-6411  
JEANNIE NELSON . . . . .856/889-5100  
WAYNE SCHOFIELD . . . . .856/931-2173  
PATTY SHEARER . . . . .856/220-5419

## It's Snow Problem!

### ABOUT THIS NEWSLETTER

**QUESTIONS? COMMENTS? IDEAS?**

**PLEASE CONTACT:**

**JANICE LYNCH, Editor**  
[jml@sicnj.net](mailto:jml@sicnj.net)

**DESIGN AND TYPESETTING by**  
**Bill Kaisla and Dan Scharnitz**  
**eMail:** [WMKaisla66@verizon.net](mailto:WMKaisla66@verizon.net)

Newsletters can be found on-line at  
[FallLineSkiClub.org](http://FallLineSkiClub.org).

If you do not wish your name and/or photo to appear in the newsletter or on-line, please request it in writing to the trip leader **PRIOR** to the trip!

# HAPPY HOUR... HAPPY HOUR... HAPPY HOUR...

September 2, 2011

## KAMINSKI'S BAR & GRILL

1424 Brace Road • Cherry Hill, NJ  
856-428-2555  
www.kaminskisbarandgrill.com

Come out on Friday August 26th to a Fall Line favorite. We will be meeting up on Kaminski's Patio. Kaminski's happy hour specials start at 3pm and run until 7pm and include a FREE Buffet and reduced priced drinks (most people meet about 5:30-6pm).

Starting 5pm Santa Cruz's own Hawaiian style band "The Island Breeze Band" plays contemporary & traditional Hawaiian music and danceable rock'n tropical surf tunes, featuring Hawaiian steel guitar, ukulele and surf guitar. Hula, with award winning dancers, is performed throughout their performances..... "The Island Breeze Band" members; Sista Patti Maxine, Uncle Dave Ray, Alan Souza, Bill Leff, and Santa Cruz native Stan Meidinger.

Sounds Like: Traditional & Contemporary Hawaiian and Rock'n, Tropical, Surf Music

For further info please contact:  
Jeannie Nelson at 856-889-5100

September 16, 2011

## THE JET WINE BAR

1525 South Street • Philadelphia, PA.  
215-735-1116  
Happy hour prices from 4-7 pm

This is a new place to try out for our Philly folks. There is plenty of free parking. The food is great and the weather is still good. Please join us for a great night in the city. Our standard happy hour specials are \$5 trebbiano (white) and montepulciano house wines, \$4 kenzinger beer, and a daily \$5 cocktail, from 4pm-7pm. To accentuate Jet Wine Bar's global vineyard, they offer a revolving menu of small plates. Jet offers meats, cheeses, sandwiches, and snacks that are hand-picked to complement their diverse wine and beverage selection. You don't need a passport to sample tastes from around the world, just set your course for Jet!

September 23, 2011

## HOULIHANS

2050 Route 70 West • Cherry Hill, NJ 08002  
856-662-9300

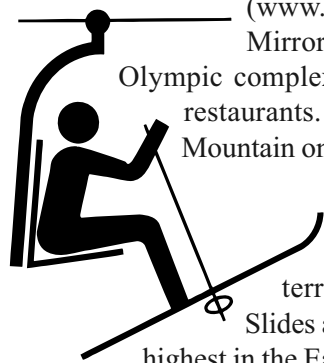
From 4-7 they are offering:  
\$1.00 off all Domestic and Import Draft Beers  
\$1.00 off all Featured Drinks on their Drink Menu

## Lake Placid/Whiteface

February 3-6, 2012

By John Kennedy

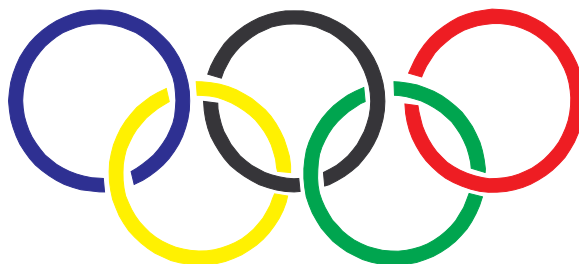
Fall Line returns to the Adirondacks on February 3 for three days at the site of the 1980 Winter Olympics. We are staying in the heart of Lake Placid at the Northwoods Inn (www.northwoodsinn.com), opposite



Mirror Lake, dog-sledding, near the Olympic complex with lots of great shops and restaurants. We are skiing at Whiteface Mountain on a 2 of 3 day lift ticket (upgrade to a 3rd day for \$55). Whiteface lifts rise to nearly 4,400 feet, although the skiable terrain rises to 4,650 feet in The Slides area. The vertical drop is 3,430-highest in the East and you can ride on 86 trails.

Our trip includes three full breakfasts at the Pavilion Café and a super bowl party in The Cabin (Eagles-Jets anyone?) The Northwoods is full of Adirondack charm with roaring fireplaces and interiors reminiscent of scenes from Northern Exposure. In fact, that's the name of their restaurant.

The trip runs Feb. 3-6 and costs \$459 at the Sept. 20 meeting (\$489 after this date). For questions, see me at the Road Rally table or contact me at 856-761-2863 or via email at johnkennedy0880@comcast.net



# Southern New Jersey TOUR DES FARMS

## Saturday September 10, 2011 at 8:00am

*Join us on a ride through the Burlington County Farm Belt.*



We'll pedal through some of New Jersey's most beautiful farmland, view some of the many farms that have been preserved forever through the Burlington County Farmland Preservation Program and get to know the diversity of Jersey's agricultural production and shop for local produce as we ride. Some of the stops along the way include a cranberry farm, vegetable farms, pick it yourself orchards, nurseries, an organic farm, an alpaca farm, and a community supported agriculture farm. Don't worry, you won't have to carry all your purchases on the bike with you! They will pick up your purchases and deliver them back to the starting point for you.

***Ride options include a 16, 29 and a 54 mile route.***

Registration fee is \$45 in advance and \$50 day of. Proceeds from this ride will fund the Farming for the Future Mini Grant Program. The South Jersey Resource Conservation and Development Council (SJRC&D), is a nonprofit organization dedicated to protecting and improving the natural resources of South Jersey.

For more information and directions go to <http://www.sjrcd.org/tourdesfarms>

Jane Gonzales – 609-707-0445

### **Same Day and After Your Ride:**

Relax and wrap up your biking day adventure at Fall Line's Annual End of Summer Picnic and Lobster Fest. Last day for reserving your lobster is at the September 6th Mixer Meeting or contact Nona Luce at [NonaLuce@FallLine.org](mailto:NonaLuce@FallLine.org) or at 856-522-9867.



---

## ***Fall Line's Multiple Sclerosis Bike Team: Ride for Life!***

**September 24 & 25, 2011**

By Melanie Sawicki

I invite you to bike to create a world free of MS and have fun at the same time by joining the Fall Line Biking Team's charity ride on Sept 24 & 25. This bike ride is not a race; it's a ride at everyone's own pace - **for one cure.**

The 30,000 riders who take part are very friendly and supportive of each other. I have been doing this ride for the last 7 years and I have a great time each year. If you have never participated in an organized ride, the MS City to Shore charity ride is the perfect opportunity

to start. Enjoy flat terrain as you ride through the blueberry fields of Hammonton and South Jersey Pine Barrens to the Ocean City Boardwalk. This event is a supported ride providing food and refreshments every 20-25 miles. A rider can choose to ride one or two days totaling 25, 50, 75, 150, or 175 miles.



Since this is a charity event, each rider is required to collect a minimum of \$300 in sponsorships and donations. There are several ways to donate. If you ask all of your friends and acquaintances to pledge 5 cents a mile – that's a total of just \$7.50. If you can do more, that would be even better. We will also collect at our Mixer Meetings at Dublin Square. Make checks out to "National MS Society" and on the memo line of the check, please write in the name of the person you are sponsoring.

Call me to join our team and help to create a world free of MS.

Thanks,

Melanie Sawicki, 609-313-2643

Email: [melaniej33@comcast.net](mailto:melaniej33@comcast.net)



**2011 Fall Line Ski Club Social Activities  
or *Reasons to Get Out of the House.* . .**

*If you would like to join the Social Activities Planning Committee*

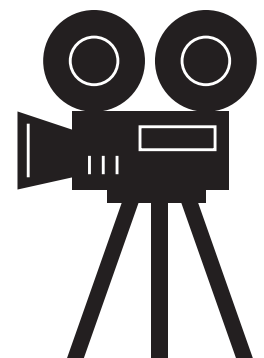
Contact: [NonaLuce@FallLine.org](mailto:NonaLuce@FallLine.org)



Date	Event	Leader	Details	Price
Sept 2	Happy Hour at Kaminski's Cherry Hill, NJ	Jeannie Nelson 856-889-5100	Avoid Labor Day traffic and meet us on the outside patio from 3 to 7pm. Wear your Hawaiian shirt and dance to a Hawaiian style band "The Island Breeze Band"	OYO
Sept 4	Cannstatter German Festival Academy Rd., Philadelphia	Marion Rosener 856-904-5565	Great German beer and food Meet at entrance at 2pm	OYO \$6
Sept 10	Tour de Farms Bike Ride Ride starts at 8am	Jane Gonzales 609-707-0445	Bike from farm to farm making purchases along the way. Ride a 15, 29 or a 54 mile route	\$45 in advance \$50 day of
Sept 10	Lobster Fest Cherry Hill, NJ	Nona Luce, 856-522-9867	End of Summer Party. Lobster, steamers, corn on cob, salads, desserts, beer on tap, games	\$35 w/ lobster \$25 w/ chicken
Sept 16	The Jet Wine Bar 1525 South Street Philla, PA	Jeannie Nelson 856-889-5100	Happy Hour prices from 4-7 \$5 house wines. \$4 Knzinger beer \$5 daily cocktail	OYO
Sept 21	Movie Night at Rave Motion Pictures Ritz Center	Nona Luce 856-522-9867	Call Nona if going	\$7.25 OYO
Sept 23	Happy Hour at Houlihan's Rt. 70, Cherry Hill, NJ	Jeannie Nelson 856-889-5100	Happy Hour prices from 4-7 \$1 off domestic and Imported draft beers and featured drinks. Appetizers start at \$4.	
Sept 24-25	MS 150 Weekend Biking Event	Melanie Sawicki 609-313-2643	Charity Ride. Donations are your entry fee. Practice Rides are scheduled.	OYO & \$300 in donations
Oct 1	Road Rally	John Kennedy 856-761-2863 Carrie Silk 609-410-1232	Details on web site	TBD
Oct 12	Movie Night at Rave Motion Pictures Ritz Center	Nona Luce 856-522-9867	Movie TBD Applebee's after the movie	\$7.25 OYO
Oct. 22	Corn Maze @ Springdale Farms	Jeannie Nelson 856-889-5100	To be announced	TBD
Nov. 12	Warren Miller Film	Michele LeConey	6pm at Academy of Natural Sciences	TBD
Nov. 16	Movie Night at Rave Motion Pictures Ritz Center	Nona Luce 856-522-9867	Movie TBD Applebee's after the movie	\$7.25 OYO
Nov. 29	Bowling Party and Happy Hour	Nona Luce 856-522-9867	Ladies Night (pay for 1 game / get 2 free)	\$3 shoes \$3 per game
Dec. 10	FLSC Holiday Party	Michele LeConey	At the Wine Room, Cherry Hill	TBD
Dec. 14	Movie Night at Rave Motion Pictures Ritz Center	Nona Luce 856-522-9867	Movie TBD Applebee's after the movie	\$7.25 OYO



*Save the Date!!*  
Movie Night  
September 7, 2011



# Fall Line Ski Club

## 2011-2012 Winter Trip Schedule as of September 2011

*All FLSC trips include Lift Tickets. FLSC provides Beer, Wine & Soda on weekend bus trips.  
Extended trips include air and ground transportation. Lodging is two per room.*

**PRICES ARE SUBJECT TO CHANGE.**

DATE	LOCATION	TRIP LEADER	LODGING	SOME FEATURES	OPENS	PRICE
Jan. 6-11	Snowbird / Alta, UT	Ann Marsteller 856-772-9414	The Lodge	Non Stop Flights: Phila. – Salt Lake City; 5 nights lodging at The Lodge at Snowbird; 4-day Snowbird/Alta lift pass (w/Tram); Group Party; Wine & Cheese Party	7 spots left	\$1,209
Jan. 21-28	Steamboat, CO	Nona Luce 856-522-9867	The Lodge	<b>EPSC Ski Carnival</b> – 7 nights Lodging; RT non-stop flights Phila. – Denver; Transfers Cherry Hill – Newark; Welcome Reception on Sat. night with light appetizers; Buffet Breakfast Sun.; Apres Ski Party; Carnival Race; On Mountain BBQ; Theme Banquet; Farewell Desert Buffet; 5 of 7 day Ski Pass	OPEN	\$1,549
Feb. 3-6	Lake Placid, NY	John Kennedy 856-761-2863	Northwoods Inn	3 nights lodging in the heart of Lake Placid; 2 of 3 day lift (can upgrade to 3) at Whiteface (greatest vertical drop in the East); 3 buffet breakfasts; visit Olympic sites; Superbowl Party	Sep. 20 <sup>th</sup>	<b>\$459</b> \$489
Feb. 4-11	Lake Tahoe, NV	Sara Walls 609-747-8582	Mont Bleu Resort & Casino	RT Air from Phila.-Reno; 7 nights Lodging; 4 out of 6 day pass at Heavenly; 1 day ski charter to Squaw w/transfers; Group Party	SOLD OUT; Get on wait list	\$1,309
Feb. 25 – March 3	Snowmass / Aspen, CO	Dave Lummis 609-440-1441	The Wildwood Hotel	RT Non-Stop Air from Phila.-Denver; 5-Day Aspen/Snowmass Lift Pass; 7 nights lodging; daily breakfast at the Village Steakhouse	SOLD OUT; Get on wait list	\$1,539
March 1-4	Jay Peak, VT	Pat Maguire 856-772-1120	Jay Peak, NEW HOTEL 2	Everything you've loved and NOW MORE! 3 nights slope-side hotel accommodations connected to new Water Park; 3 days skiing; group lessons Fri. & Sat.; Wine & Cheese Party; 3 breakfasts/2 dinners; 3-day water park ticket. (2pm bus departure from Cherry Hill.)	Oct. 4 <sup>th</sup>	<b>\$579</b> \$609
March 10-18	Cortina, Italy	Patty Shearer 856-220-5419	4★ Concordia Parc	<b>CORTINA ONLY</b> – RT Air from Newark to Venice & Transfers; 7 nights lodging; buffet breakfast & 4-course dinner daily; 6-day ski pass at all areas of Dolomiti Superski <b>Not Skiing, Deduct \$350.00</b>	<b>OPEN – Early Discount NOW Until Sep. 6!</b>	<b>\$2,119</b> \$2,169
March 10-21	Cortina / Sicily, Italy	Patty Shearer 856-220-5419	4★ Hotel Villa Diodoro, Taormina	<b>CORTINA w/SICILY EXTENSION</b> – Above plus 3 nights lodging in Sicily; air and bus transfers; breakfast daily; ½ day guided tour in Taormina		<b>\$2,653</b> \$2,703
March 16-18	Killington, VT	Ed Keating 856-979-4324 (No Text Msg.)	Northstar Lodge	Going back home for St. Patty's Day Weekend! Remember sitting in the poolside Jacuzzi sharing ski adventures? Remember walking to the Grist Mill? 2 nights lodging; 2 days skiing	Oct. 18 <sup>th</sup>	<b>\$379</b> \$409
March 21-26	Winter Park, CO	Jeff Stein 856-728-1254	BW Alpenglo Lodge	RT air from Phila.-Denver; 5 nights lodging; 4-day ski pass; Buffet breakfast daily	OPEN	<b>\$1,059</b> \$1,099

Prices in **bold** reflect early sign-up discount. This discount is available only at trip opening for weekend trips; for weeklong trips it's available for the first two meetings the trip is open. You must be a member to sign up!

**If you are interested in becoming a Trip Leader or joining the Winter Trip Committee and assisting in the coordination of our winter trips, please contact Patty Shearer, Winter Trip Chair at 856.778.4657.**

Fall Line Ski Club  
 Profit & Loss Summary  
 May 2010-April 2011

Income	
Interest	\$208.56
Membership	\$6,925.00
Summer Trips	\$163.24
Winter Trips	\$9,672.43
Total Income	\$16,969.23
Expense	
Accounting	\$2,381.00
Meetings	\$2,605.96
Other Expenses	\$8,444.20
Parties	\$600.57
Postage	\$2,459.32
Printing	\$2,349.73
Telephone	\$1,369.28
Total Expense	\$20,210.06
Net Income	-\$3,240.83

If you wish to see the entire Financial breakdown, please see the Treasurer or Treasurer-Elect at a general meeting.

# Reminder!

Membership goes up \$5 after 9/10/11.

Renew at the meeting on 9/6/11  
 or by mail before 9/10/11.

Check your mailing label on any newsletter to see if you need to renew. For membership information go to the website at [www.FallLineSkiClub.org](http://www.FallLineSkiClub.org)

or e-mail specific questions to [Membership@FallLine.org](mailto:Membership@FallLine.org)



## Saturday, October 1 The Road Rally Roars Again

*By John Kennedy*

**Cost Per Person:** \$10

**Meeting Time and Location:** To Be Determined

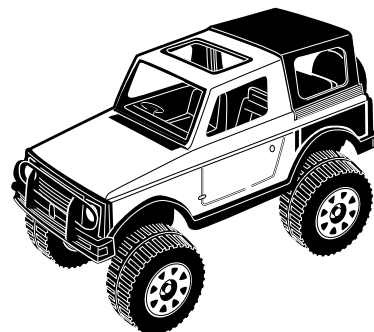
Gather up a team and a car and join us on our annual mobile scavenger hunt through the wilderness of New Jersey. Teams of 2-4 people will decipher cryptic clues to esoteric locations and solve enigmatic riddles. Sort of like a congressional debate.

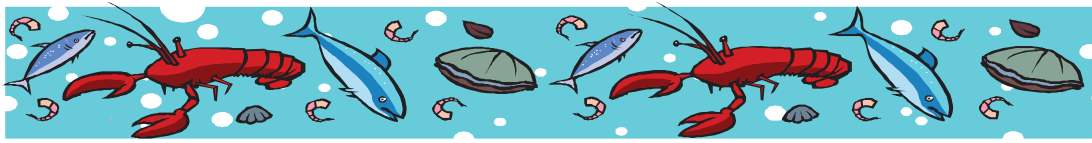
The rally is not a race. How you finish is based on points earned. Time would be used only to break a tie. Each team must have a driver and at least one navigator; no one drives alone.

Cost to enter is \$10 per person which covers the cost of the “elaborate” prize for the winning team plus our award-winning picnic/Happy Hour at the finish. For those of you who are familiar with my rallies of the past,

this will be much shorter (no shore-bound marathons). With any luck, the rally will finish before halftime of the early NCAA games or the first pitch of the devious game of the baseball season.

For questions or sign-ups, see me at the meetings (I’m the guy at the Lake Placid table) or contact me at 856-761-2863 or via email: [johnkennedy0880@comcast.net](mailto:johnkennedy0880@comcast.net)





Celebrate the End of the summer at Fall Line Ski Club's

# Lobster Fest

**Saturday, September 10, 2011, 3:00 pm – 11:00 pm**

Fest will be held at the home of Ed Keating  
329 Covered Bridge Road, Cherry Hill, NJ 08034

**On the Menu:** Corn on the cob, potato salad, cold slaw, home made Paella and various desserts, Coors Light in keg and bottled water.

**With Lobster:** **\$35 a head** gets a lobster and a dozen steamers with butter and all the menu items

**Without Lobster:** **\$25 a head** for Grilled Chicken and all the menu items

**Bring your own:** Chairs and beverage of choice if you don't like Coors

Place your order at the Mixer Meeting at Dublin Pub or contact  
Nona Luce (856) 522-9867 or NonaLuce@FallLine.org

\*\*\*\*\* **Fall Line Ski Club - Powder Express** \*\*\*\*\*

**10**

*“As featured in the Philadelphia Inquirer”*

**www.FallLineSkiClub.org**

**PLEASE VISIT FALL LINE SKI CLUB'S WEBSITE @**

*Address Service Requested*

Cherry Hill, NJ 08034

P.O. Box 1535

**Fall Line Ski Club**

**First Class**

U.S. Postage

**PAID**

Bellmawr, NJ 08031

Permit No. 884