

Jay Peak – It just Keeps Getting Better!!!

By: Kathie Read

Once again all the ingredients for the perfect ski weekend have been gathered together and put into the Fall Line Cuisineart and the result is Jay Peak!!! By popular demand, Fall Liners will be returning to this **snow sure** destination for a 3-day weekend, Thursday, March 3, through March 6, 2011.

Being the beneficiary of remarkable snowfall (351 average inches per year), this unique and distinct mountain has something to offer skiers of all ability levels.

Advanced skiers will discover chutes, bumps and steeps. Jonesin' to brush up on your tree skiing? Having been judged **The Best in North America**, Jay's large and diverse glade system is the place to go. They even have a few tree runs for beginners.

Not a "tree basher"? With 75 trails and 285 acres, there's plenty left on Jay Peak's plate. Intermediate skiers can satisfy their craving for real "New England" skiing at its best - narrow runs and trails that meander through evergreen and hardwood glades. Even beginners and old dogs alike can sate their skiing appetites by taking advantage of the group lessons on Friday and Saturday.

Now, onto the lodging. As many of you know, the Hotel Jay was demolished this spring to make way for a brand spanking new hotel and indoor water park. That's the good news, but the bad news is this new hotel will not be ready until the 2011-2012 season. Our good friends at Jay Peak did not want to go a season without the famous visit from FLSC, so they have "sharpened their pencils" and offered FLSC a sweet deal, for this year only, to stay in the luxurious, new five-star Tram Haus Lodge.

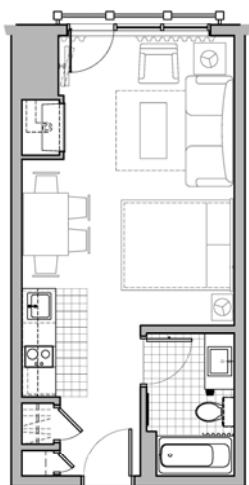
The Tram Haus Lodge is located mere steps from the Tram and Flyer Quad. The hotel includes a new cafe (Aroma), bar (Tower Bar), and restaurant (Alice's Table). Sure it's shiny and new and wonderful but more importantly, we think, it includes thoughtful details that make it more Jay Peak:

- * Old Tram cable is used throughout the hotel - on exterior deck railing, signage lobby chandelier and floor lamps, and toe kicks in the Tower Bar.
- * Chairlift towers and sheave wheels from the old Green Mountain chair incorporated in the Tower Bar.
- * The barnboard tables in Alice's Table were created by local carpenter Luke Hardy (Montgomery, VT) from reclaimed barn wood from neighboring towns of Franklin County.
- * Locally manufactured maple hardwood furniture by Lyndon Furniture (Lyndon, Vermont).
- * Wool, throw blankets included in the units were manufactured by Johnson Woolen Mills (Johnson, VT).

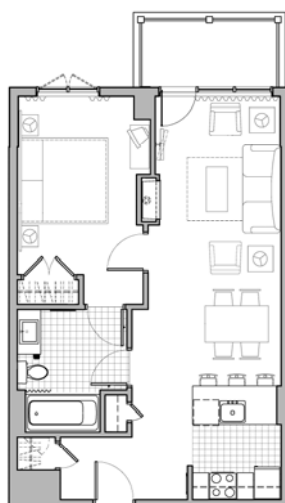
There are literally dozens of other examples that weave Jay Peak and its local community into the new Tram Haus Lodge.

We will be having our meals at Alice's Table named after Alice Lewis who worked at Jay Peak during the Walter Foeger years (1956-1968). She was the front office manager and a tireless worker handling everything from accounting and marketing to budgeting, parking and payroll. She embodied the Jay Peak character in everything she did and even ran a de facto boarding house for Jay Peak workers just across the road from the mountain. On many nights, she'd make dinner and invite those staying with her to join together. In that spirit, Jay Peak named this restaurant Alice's Table, and keep one table open, each night, so that folks can gather around, have dinner and share stories. Alice was always a behind the scenes talent and didn't ever want the light on her. Jay Peak is happy to have the opportunity to share her story and welcome you to her Table.

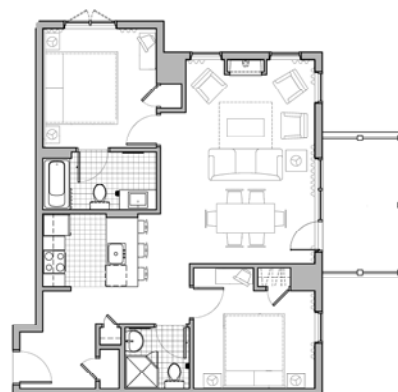
I have included below the suite/condo configurations. All the rooms have either a queen/king bed and sleeper sofa. In order to keep the price within reason, we have put two people per studio, 3 people per one bedroom/bath condo, and 3 people per two bedroom/bath condo. If people are not willing to share the queen/king bed, someone will have to sleep on the sleeper sofa. This is not normal policy for FLSC, but it is three nights and for one year only.



TRAM HAUS LODGE - STUDIO



TRAM HAUS LODGE - ONE BEDROOM



TRAM HAUS LODGE - TWO BEDROOM

We are also offering a one bedroom/bath for two people. This would be a great weekend getaway for a couple or anyone who wants the privacy of a separate bedroom from the living/eating space.

This trip is truly a bargain. Just to recap, the trip price includes:

- * Round-trip motor coach from Cherry Hill to Jay Peak
- * 3 nights accommodations at 5* Tram Haus Lodge (ski-in and ski-out)
- * 3 breakfasts and 2 dinners
- * 3 day lift pass
- * 2 Group Lessons on Friday and Saturday
- * Wine and cheese reception

All of the above for per person rate:

Early sign-up Oct.19, 2010	Price after Oct. 19, 2010	
\$579	\$609	Suite - 2 people
\$598	\$628	1 Bedroom/1 bath - 3 people
\$654	\$684	1 Bedroom/1 bath - 2 people
\$630	\$660	2 Bedrooms/2 baths - 3 people

Contact Information: Kathie Read 856-344-2459 or kathieread@comcast.net